



560E
WHEEL LOADER

EXTRA



■ **Net Horsepower**
319 kW (427 hp)

■ **Bucket Capacity**
5.35 m³ to 11.5 m³
(7 yd³ to 15 yd³)

■ **Operating Weight**
41 980 kg (92,549 lb)

560E

WHEEL LOADER

- Joystick for boom and bucket control
- High lift boom attachment
- Hydrostatic steering
- High visibility cab design



ENGINE

* Make and model Cummins QSX15
 Type In-line, 6-cylinder
 Aspiration Turbocharged and CAC
 Fuel system HPI Electronic
 Gross Horsepower SAE J1995 336 kW (450 hp)
 ** Net Horsepower SAE J1349/ISO 9249 319 kW (427 hp)
 Rated rpm 2000 rpm
 Max. torque @ 1400 rpm 2102 Nm (1,550 lb-ft)
 Displacement 15 l (912 in³)
 Bore and stroke 137 x 169 mm (5.39" x 6.65")
 Air cleaner dry type, dual stage with
 dust discharge valve

* Meets EU Stage IIIA and EPA Tier 3 emission regulations
 ** Net Horsepower at the minimum speed of hydraulic fan 333 kW (445 hp)

TORQUE CONVERTER

Single stage, single phase type, 2.72 to 1 stall ratio.

TRANSMISSION

Full power shift, countershaft type transmission is driven by a double universal joint from the torque converter.
 High strength gears are in constant mesh with clutch packs controlling power transfer. Transmission directional and speed shifts are controlled by two levers at the operator's finger tips.

TRAVEL SPEEDS

Gear	Forward & Reverse	
	km/h	(mph)
1st	7.1	(4.4)
2nd	12.2	(7.6)
3rd	32.5	(20.2)

AXLES

Heavy-duty type with full-floating axle shafts and planetary final drive.
 Four wheel drive. Front axle fixed, rear axle oscillates a total of 23°. Vertical wheel travel of 559 mm (22"). Conventional differentials.

STEERING

Articulated frame. Hydrostatic type providing smooth steering control at any engine speed.
 Tilting and telescoping steering column for operator efficiency.
 Articulation, right or left 35°
 Turning radius outside of tires. 8.03 m (26'4")

BRAKES

Service – Four wheel, hydraulic applied, sealed, force cooled, internal, multiple wet disc brakes with separate axle-by-axle operation.
 Parking – Spring applied, hydraulically released, disc type, located on front axle.

TIRES

Standard: 29.5 x 29, 34 PR (L-3).

HYDRAULIC SYSTEM

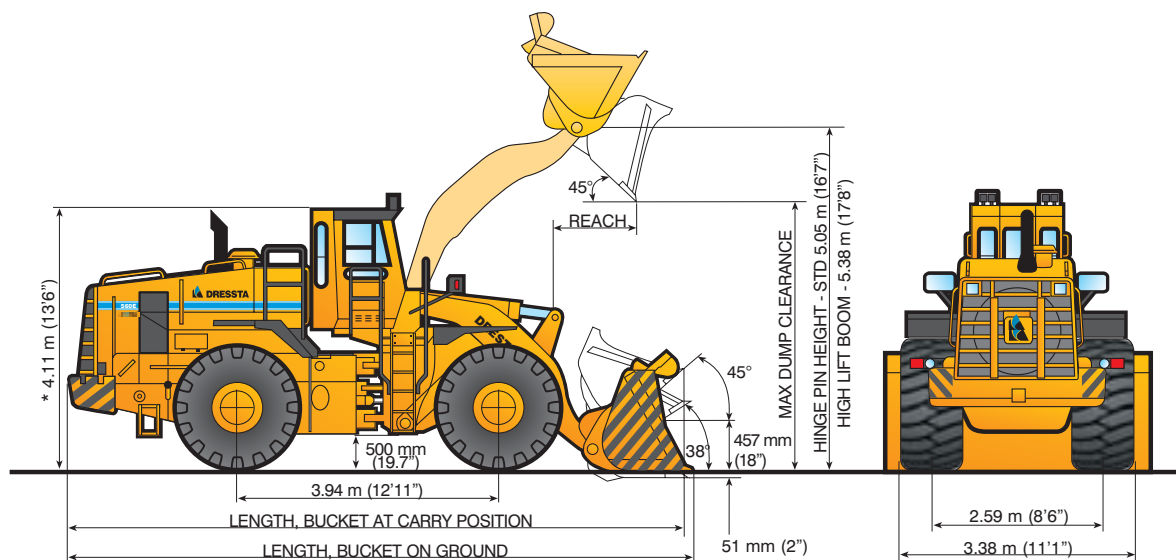
Reservoir: Cylindrical type with 10 μ filtration for excellent full flow filtering, suction screen.
 Pumps, gear type, driven from torque converter:
 – triple element (loader equipment and steering, auxiliary and brake cooling pump)
 – double element (hydraulic equipment and steering and pilot pump)
 Equipment Hyd.: aggregate output @ 2000 rpm and 6.89 MPa (1,000 psi) - 530 l/min (140 gpm)
 Steering Hyd.: aggregate output @ 2000 rpm and 6.89 MPa (1,000 psi) - 390 l/min (103 gpm)
 Valve: Two spool with relief valve, single lever control
 Relief valve pressure 21 MPa (3,000 psi).
 Cylinders (double acting) – hardened chrome plated piston rods.
 Boom – Bore and Stroke (2) 216 x 1219 mm (8.5" x 48")
 Bucket – Bore and Stroke (1) 254 x 749 mm (10" x 29.5")
 Steering – Bore and Stroke (2) 127 x 489 mm (5" x 19.25")
 Raise boom 9.1 sec. Lower boom 5.6 sec.
 Dump bucket in 2.8 sec.

REFILL CAPACITIES

	Liter	(US gal)
Fuel tank	700	(185)
Cooling system	82	(21.7)
Crankcase	49	(13)
Transmission system	144	(38)
Differential & final drive, each	80	(21)
Hydraulic reservoir	206	(54)

INSTRUMENTATION

Gauges: engine coolant temperature, engine oil pressure, hourmeter, torque converter oil temperature, voltmeter
 Warning lights: parking brake applied, partial brake system failure warning, engine coolant overheat, trans. & hyd. filter change indicator, torque converter overheat, low fuel level, service brake
 Visual sight gauges: hydraulic reservoir, radiator coolant, air cleaner service indicator, transmission oil, fuel level



*Add 240 mm (9.5") to overall height if roof mounted lights are used

STANDARD BOOM

BUCKET SELECTION		Rock				General Purpose		Coal
		Spade Nose	Spade Nose with teeth	Straight Edge	Straight Edge with teeth	Straight Edge	Straight Edge with teeth	Straight Edge
Capacity, SAE	Rated, m ³ (yd ³)	5.7 (7.5)	5.7 (7.5)	5.7 (7.5)	5.7 (7.5)	6.5 (8.5)	6.5 (8.5)	11.5 (15.0)
	Struck, m ³ (yd ³)	4.7 (6.1)	4.7 (6.1)	4.7 (6.1)	4.7 (6.1)	5.4 (7.1)	5.4 (7.1)	9.7 (12.8)
Bucket Width		3.65 m (143.5")	3.65 m (143.5")	3.65 m (143.5")	3.65 m (143.5")	3.65 m (143.5")	3.65 m (143.5")	4.47 m (176")
Dump Clearance @ Max. Height and 45° Dump Angle		3.48 m (11'5")	3.27 m (10'9")	3.59 m (11'9")	3.37 m (11'1")	3.48 m (11'5")	3.27 m (10'9")	3.24 m (10'8")
Reach @ Max. Height and 45° Dump Angle		1.53 m (5')	1.75 m (5'9")	1.43 m (4'8")	1.64 m (5'5")	1.53 m (5')	1.74 m (5'9")	1.77 m (5'10")
Reach @ 2.13 m (7') Clearance and 45° Dump Angle		2.34 m (7'8")	2.55 m (8'4")	2.23 m (7'4")	2.45 m (8'1")	2.34 m (7'8")	2.55 m (8'4")	2.58 m (8'6")
Overall Length, Bucket @ Carry Position		9.60 m (31'6")	9.80 m (32'2")	9.58 m (31'5")	9.70 m (31'10")	9.60 m (31'6")	9.80 m (32'2")	9.83 m (32'3")
Overall Length, Bucket on Ground		9.83 m (32'3")	10.13 m (33'3")	9.76 m (32')	9.97 m (32'9")	9.82 m (32'3")	10.12 m (33'3")	10.16 m (33'4")
Turning Radius, Outside Corner of Bucket @ SAE Carry		8.64 m (28'4")	8.72 m (28'7")	8.60 m (28'3")	8.68 m (28'6")	8.64 m (28'4")	8.72 m (28'7")	9.15 m (30')
Static Tipping Load	Straight	32 672 kg (72,029 lb)	32 411 kg (71,453 lb)	32 762 kg (72,277 lb)	32 499 kg (71,647 lb)	32 116 kg (70,803 lb)	31 863 kg (70,245 lb)	32 807 kg (72,326 lb)
	Full Turn	28 388 kg (62,584 lb)	28 161 kg (62,084 lb)	28 466 kg (62,756 lb)	28 238 kg (62,253 lb)	27 905 kg (61,519 lb)	27 685 kg (61,034 lb)	28 505 kg (62,842 lb)
Breakout Force		317.7 kN (71,419 lb)	317.7 kN (71,419 lb)	351.2 kN (78,950 lb)	351.2 kN (78,950 lb)	319.3 kN (71,779 lb)	319.3 kN (71,779 lb)	262.6 kN (59,032 lb)
Operating Weight		41 820 kg (92,196 lb)	42 170 kg (92,968 lb)	41 650 kg (91,822 lb)	41 980 kg (92,549 lb)	41 310 kg (91,072 lb)	41 625 kg (91,766 lb)	42 450 kg (93,585 lb)

Specifications shown include all standard equipment.

All dimensions, weights and performance values per SAE J732 where applicable. Machine stability, weight and performance are affected by optional equipment.

HIGHLIFT ARRANGEMENT

BUCKET SELECTION		ROCK BUCKETS	
		Spade Nose with Teeth	Straight Edge with Teeth
Capacity, SAE	Rated	5.35 m ³ (7.0 yd ³)	5.35 m ³ (7.0 yd ³)
	Struck	4.49 m ³ (5.87 yd ³)	4.41 m ³ (5.77 yd ³)
Bucket Width		3.65 m (143.5")	3.65 m (143.5")
Dump Clearance @ Max. Height and 45° Dump Angle		3.78 m (12'5")	3.88 m (12'9")
Reach @ Max. Height and 45° Dump Angle		1.80 m (5'11")	1.70 m (5'7")
Reach @ 2.13 m (7') Clearance and 45° Dump Angle		2.75 m (9')	2.67 m (8'9")
Overall Length, Bucket @ Carry Position		10.32 m (33'10")	10.24 m (33'7")
Overall Length, Bucket on Ground		10.51 m (34'6")	10.37 m (34')
Turning Radius, Outside Corner of Bucket @ SAE Carry		8.95 m (29'4")	8.91 m (29'3")
Static Tipping Load	Straight	27 041 kg (59,615 lb)	27 609 kg (60,867 lb)
	Full Turn	23 495 kg (51,797 lb)	23 989 kg (52,886 lb)
Breakout Force		332.7 kN (74,790 lb)	367.7 kN (82,659 lb)
Operating Weight		42 424 kg (93,528 lb)	42 225 kg (93,089 lb)

560E

WHEEL LOADER



STANDARD EQUIPMENT

- Air cleaner, dry type, dual stage with dust discharge valve
- Alarm, back-up
- Alternator, 80 A
- Antifreeze, -37°C (-34°F)
- Axles, heavy duty, full floating, planetary type final drives, 4-wheel drive
- Batteries, (4) 12 V, 1050 CCA, maintenance free
- Boom kickout, automatic
- Boom, standard
- Brakes: service (SAE J1152, CODE EM 385-1-1), 4-wheel wet multi disc, full hydraulic apply, with axle-by-axle operation, R.H. pedal applies brakes only; parking, disc type on front differential, spring apply/hydraulic release with indicator light
- Bucket leveler, automatic (bucket application only)
- Cab ROPS (SAE J1040) with sound suppression, dome light, heater/pressurizer/defroster, rear view mirror, front and rear wipers and washers
- Cooling module; includes radiator, transmission oil cooler, hydraulic oil cooler, fuel cooler, charge air cooler; isolation mounted
- Counterweight, 2900 kg (6,390 lbs)
- Differentials, conventional
- Fan, suction type, hydraulically driven, variable speed
- Filters: engine oil, transmission, torque converter and hydraulic oil, cartridge type element
- Grill, rear, vertically hinged
- Horn, electric
- Hydraulic controls, single lever
- Hydraulic system, closed with pressure control
- Instruments:
 - Gauges: engine coolant temperature, engine oil pressure, hourmeter, torque converter oil temperature, voltmeter
 - Warning lights: parking brake applied, partial brake system failure warning, engine coolant overheat, trans. & hyd. filter change indicator, torque converter overheat, low fuel level, service brake filter restriction
 - Visual sight gauges: hydraulic reservoir, radiator coolant, air cleaner service indicator, transmission oil, fuel level
- Ladders: L.H. - cab access, R.H. - service ladder
- Lifting eyes and tie downs
- Lights, halogen, working and traveling, 4 front, 2 rear, 2 stop and tail, turn signals
- Lube system, ground level
- Mirrors, R.H. and L.H. rearview
- Muffler, underhood, insulated
- Panels, engine compartment side, quick access service
- Seat, adjustable, suspension type with arm rests, fabric cover
- Seat belt (SAE J386)
- Starting, 24V, electric with neutral safety start switch
- Steering, hydrostatic, articulated frame
- Steering wheel, tilt and telescoping
- Tachometer
- Tires 29.5 x 29, 34 PR (L-3)
- Torque converter, single stage, single phase
- Tow-eye
- Transmission, 3-speed, full power shift, countershaft type
- Valve, 2-spool
- Vandalism protection

OPTIONAL ATTACHMENTS

- Air conditioner/heater/pressurizer/defroster
- AM/FM CD radio
- Auxiliary steering, ground driven
- Batteries, cold start, 12V, 1900 CCA
- Beacon light, rotating
- Buckets (standard boom):
 - general purpose, 6.5 cu.m (8.5 cu.yd) straight edge or teeth
 - rock, 5.7 cu.m (7.5 cu.yd) straight edge or spade nose, with or w/o teeth
 - coal, 11.5 cu.m (15 cu.yd)
- Buckets (high lift boom):
 - rock, 5.35 cu.m. (7 cu.yd) spade nose with teeth or straight edge with teeth
- Bucket accessories:
 - tooth point kit, set of 8 (general purpose, abrasion or quarry jobs)
 - tooth removal kit
- CE accessories: fire extinguisher, first aid kit, grease gun, tools
- Centralized lubricating system
- Fenders, front and rear
- Guards, transmission, bottom and upper
- High lift boom, attachment with 5.38 m (212") hinge pin height
- Hydraulic kit: 3-spool valve, piping and controls incl. auxiliary lever
- Lighting, auxiliary, front mounted (4 cab roof mounted, 2 low level)
- Sound suppression package
- Starting aid, ether
- Tires, tubeless
 - 29.5 x 29, 34 PR (L-5)
- Tool carrier, quick coupler
 - rock bucket, spade nose 5.7 cu.m (7.5 cu.yd)
- Wheel protectors (special shipment less tires)

Specifications subject to change without notice. Illustrations and pictures may include optional equipment and may not include all standard equipment.

DRESSTA Co.Ltd.

Kwiatkowskiego 1, 37-450 Stalowa Wola, POLAND
tel. +48 (15) 813 5252, 813 4556 fax: +48 (15) 844 4714, 872 0207
www.dressta.com.pl