



534C

WHEEL LOADER

■ **Net Horsepower**
152 kW (204 hp)

■ **Bucket Capacity**
2.6 m³ to 5.7 m³
(3.4 yd³ to 7.5 yd³)

■ **Operating Weight**
20380 kg (44,930 lb)



534C

WHEEL LOADER

- Powershift transmission
- Various attachments
- Engine, emission certified



ENGINE

- * Make and model..... Cummins C8.3
 - Type..... 4-cycle diesel, turbocharged, CAC, direct start, direct injection
 - ** Gross Horsepower @ 2200 rpm..... 160 kW (215 hp)
 - *** Net flywheel power @ 2200 rpm..... 152 kW (204 hp)
 - Maximum torque @ 1500 rpm 975 Nm (719 ft. lb)
 - Bore and stroke 114 x 135 mm (4.49" x 5.3")
 - Number of cylinders..... 6
 - Displacement..... 8.3 l (506 in³)
 - Electrical system..... 24 V
 - Air cleanerdry type with service indicator
- * Meets EU Stage II and EPA Tier 2 emission regulations
 ** Output of complete engine operating under SAE J1995 conditions
 *** Output of the engine complete with fan, air cleaner, muffler, alternator (not charging), water pump, lubricating oil pump and fuel pump, per SAE J1349.

TORQUE CONVERTER

Single stage, single phase type, 3.0 to 1 stall ratio.

TRANSMISSION

Countershaft type powershift, 4 speeds forward and 4 reverse. Power shifted gears are 1st to 2nd and 3rd to 4th. Manual shifted gears are 2nd to 3rd and reverse selection with machine stopped.

TRAVEL SPEEDS

Gear	Forward & Reverse	
	km/h	mph
1 st	8.0	(5.0)
2 nd	16.0	(9.9)
3 rd	27.0	(16.8)
4 th	39.0	(24.2)

AXLES & FINAL DRIVES

Full-floating axle shafts and planetary final drive. Four wheel drive. Front axle fixed, rear axle oscillates a total of 26°. Vertical wheel travel of 480 mm (18.9"). Conventional differentials.

STEERING SYSTEM

Articulated frame. Full hydraulic power (with hydraulic follow-up system) providing smooth, responsive steering at any engine speed. Auxiliary steering – ground driven.
 Articulation, right and left..... 40°
 Turning radius outside of tires..... 6.22 m (20'5")

BRAKES

Service - four wheel, air-over-hydraulic, dry disc.
 Parking - air release, spring apply, disc type, on front axle with indicator light.

LOADER LINKAGE

Parallel loader linkage with sealed pivot points; extended lubrication intervals.

TIRES

23,5 x 25 - 20 PR (L-3) standard

HYDRAULIC SYSTEM

Reservoir: Sight gauge and one 20-micron "spin-on" type filter. Full flow filtration with suction screen.
 Pumps: One single and one double gear type driven from accessory drive.
 Main Hydr.: Output at 2200 rpm and oil pressure 15 MPa (2,175 psi), 301 l/min (79.5 gal/min).
 Steering Hydr.: Output at 2200 rpm and oil pressure 10 MPa (1,450 psi), 187 l/min (49.4 gal/min).
 Valve: Low effort, 2-spool or 3-spool with relief valve.
 Relief valve pressure 15 MPa (2,175 psi).
 Cylinders (double acting) - hardened chrome plated piston rods.
 Boom - Bore and Stroke (2) 160 x 860 mm (6.3" x 33.8").
 Bucket - Bore and Stroke (2) 160 x 470 mm (6.3" x 18.5").
 Steering - Bore and Stroke (2) 110 x 442 mm (4.3" x 17.4").
 Hydraulic cycle times: raise boom – 6 sec, dump bucket – 2 sec, lower boom – 3.5 sec.

HYDRAULIC CONTROLS

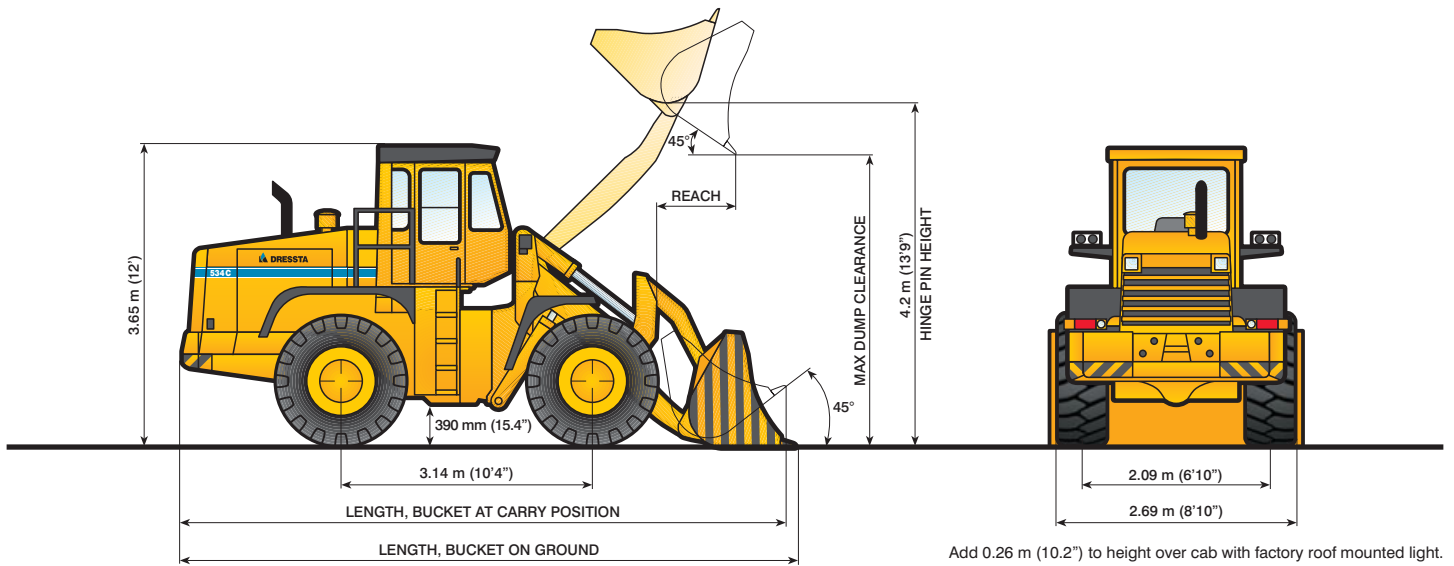
Boom positions: raise, hold, lower, float.
 Bucket positions: rollback, hold dump.

REFILL CAPACITIES

	Liter	(US gal)
Fuel tank	300	(79.3)
Cooling system	32	(8.5)
Crankcase w/filters	19	(5.0)
Transmission system	95	(25)
Differential & final drive, each	35	(9.2)
Hydraulic reservoir	230	(60.8)

INSTRUMENTATION

Gauges: brake system air pressure, engine coolant temp., engine lube oil pressure, engine oil temp., torque converter oil temp., fuel level, speedometer, voltmeter, hourmeter, tachometer.
 Warning lights: engine coolant overheat, low engine lube oil pressure, low air pressure, low coolant level, ground driven steering, low fuel level, parking brake applied, filter service indicators (hydraulic and steering system, air cleaner)
 Visual sight gauges for hydraulic reservoir and transmission.

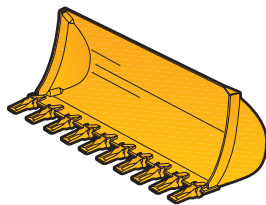


BUCKET SELECTION		General Purpose	General Purpose w/ripper	Rock bucket	Multipurpose bucket	Light material bucket	Rock bucket for tool carrier	High dump bucket	Coal and agricultural
Bucket Capacity (SAE)	Rated, m ³ (yd ³)	3.4 (4.5)	3.4 (4.5)	2.7 (3.5)	2.6 (3.4)	5.7 (7.5)	2.7 (3.5)	2.8 (3.7)	5.6 (7.3)
	Struck, m ³ (yd ³)	3.02 (3.95)	3.02 (3.95)	2.45 (3.20)	1.73 (2.3)	4.58 (6.0)	2.03 (2.65)	2.50 (3.27)	4.5 (5.9)
Bucket Width		2.8 m (9'2")	2.8 m (9'2")	2.8 m (9'2")	3.0 m (9'10")	3.51 m (11'6")	2.84 m (9'4")	2.85 m (9'4")	3.1 m (10'2")
Dump Clearance @ Max. Height and 45° Dump Angle		3.1 m (10'2")	3.1 m (10'2")	3.05 m (10'0")	3.0 m (9'10")	2.92 m (9'7")	3.05 m (10'0")	4.18 m (13'9")	*3.8 m (12'6")
Reach @ Max. Height and 45° Dump Angle		1.07 m (3'6")	1.07 m (3'6")	1.12 m (3'8")	1.85 m (6'1")	1.25 m (4'1")	1.11 m (3'8")	1.36 m (4'6")	2.0 m (6'7")
Overall length, Bucket @ Carry Position		7.87 m (25'10")	7.87 m (25'10")	7.92 m (26'0")	7.97 m (26'2")	8.03 m (26'4")	7.86 m (25'9")	8.08 m (26'6")	8.23 m (27')
Overall length, Bucket on Ground		7.93 m (26'0")	7.93 m (26'0")	7.97 m (26'2")	7.89 m (25'11")	8.12 m (26'8")	7.94 m (26'1")	8.18 m (26'10")	8.11 m (26'7")
Turning Radius, Outside Corner of Bucket @ SAE Carry		6.22 m (20'5")	6.22 m (20'5")	6.23 m (20'5")	7.3 m (23'11")	6.58 m (21'7")	6.32 m (20'9")	6.58 m (21'7")	6.72 m (22')
Breakout Force	kN (lb)	140 (31,472)	140 (31,472)	140 (31,472)	86 (19,333)	140 (31,472)	140 (31,472)	104 (23,380)	-
Static Tipping Load	- Straight, kg (lb)	16970 (37,412)	16970 (37,412)	16970 (37,412)	14500 (31,967)	13500 (29,762)	13900 (30,644)	13750 (30,313)	13300 (29,321)
	- Full Turn, kg (lb)	14785 (32,595)	14785 (32,595)	14000 (30,864)	12000 (26,455)	11000 (24,250)	11000 (24,250)	11590 (25,551)	11000 (24,250)
Weight of Bucket	kg (lb)	1090 (2,403)	1250 (2,756)	1360 (2,998)	1580 (3,483)	1780 (3,924)	1200 (2,646)	2090 (4,608)	2400 (5,291)
Operating Weight	kg (lb)	20380 (44,930)	20540 (45,282)	20650 (45,525)	21290 (46,936)	21070 (46,451)	20340 (44,842)	21380 (47,134)	21540 (47,487)

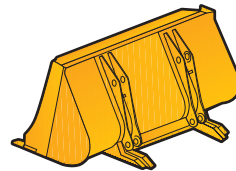
All dimensions, weights and performance values per SAE J732, where applicable. Specifications shown include all standard equipment and 23.5 x 25, 20 PR (L-3) tires. Machine stability, weight and performance are affected by optional attachments.

*90° dump angle

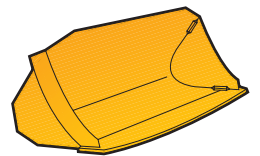
WORKING ATTACHMENTS



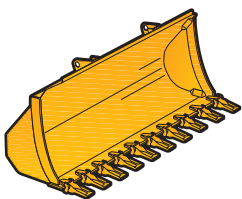
General purpose buckets with teeth, spade nose, straight edge and bolt-on cutting edge



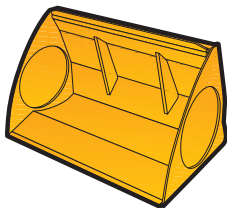
General purpose bucket w/ripper



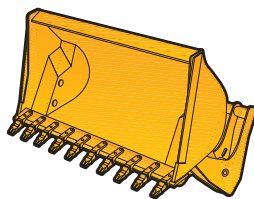
Rock bucket, spade nose



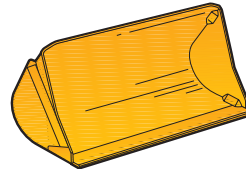
Rock bucket with teeth



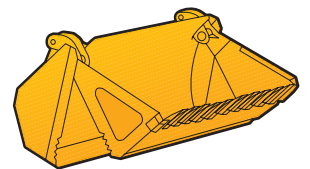
Coal and agricultural, ejector bucket



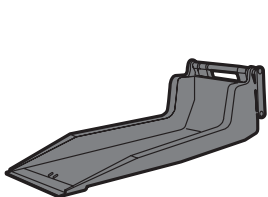
High dump bucket



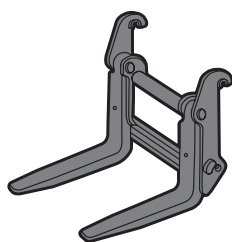
Light material bucket



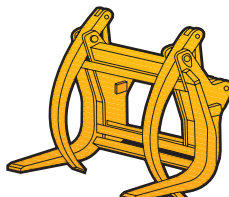
Multipurpose bucket



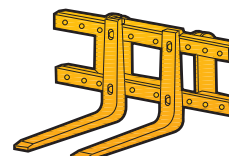
Belt conveyor vicinity clean up bucket



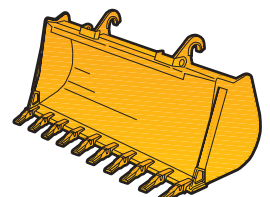
Fork-lift attachment for use with tool carrier



Hydraulic grapple
Lifting capacity - 5500 kg
Width - 1.8 m (71")
Clamp diameter - min/max 0.23 m/1.8 m (9"/71")



Fork-lift attachment
Lifting capacity - 5500 kg (12,125 lb)
Width - 2.4 m (94")



Rock bucket, with teeth, for use with tool carrier

534C WHEEL LOADER



STANDARD EQUIPMENT

- Air cleaner, dry type with service indicator
- Alarm, back-up
- Alternator, 70 A
- Auxiliary steering – ground driven
- Axles, conventional differentials
- Back-up lights
- Batteries, (2) 12 V, 1150 A
- Beacon light, rotating
- Boom kickout
- Brakes; service - four wheel, air - over - hydraulic, dry disc; parking – disc type, front axle mounted
- Cab standard, w/seat belt, inside mirror, sun visor, wipers w/washers, dome light and heater
- ROPS/FOPS, 2 post (SAE J1040 and J231)
- Cooling module; includes radiator, transmission and torque converter oil cooler and charge air cooler
- Counterweight, 2650 kg (5,842 lb)
- Engine hood, sloped
- Fenders, front and rear
- Filters, engine oil and fuel, hydraulics, transmission-torque converter
- Fire extinguisher
- Horn, electric
- Instruments:
 - Gauges: brake system air pressure, engine coolant temp., engine lube oil pressure, engine oil temp., torque converter oil temp., fuel level, speedometer, voltmeter, hourmeter, tachometer
 - Sight gauges: hydraulic reservoir, transmission oil
 - Warning lights: engine coolant overheat, low engine lube oil pressure, low air pressure, low coolant level, ground driven steering, low fuel level, parking brake applied, filter service indicators (hydraulic and steering system, air cleaner)
- Ladder, left and right side
- Lights, working and traveling, 4 front and 2 rear, 2 stop and tail, turn signals
- Maintenance tools
- Master electrical disconnect
- Mirrors, LH and RH, rear view, outside
- Seat, suspension type, adjustable height, tilting, forward and backward movement
- Starting, 24V
- Steering, hydrostatic, articulated frame
- Tires, tubeless 23.5 x 25, 20 PR (L-3)
- Tire inflation kit
- Torque converter, single stage
- Towing pin
- Transmission, powershift, hydraulic control, 2nd to 3rd gear shifted mechanically
- Valve, 3-spool; 3rd section plugged
- Vandalism protection

OPTIONAL ATTACHMENTS

- Air conditioner and heater/pressurizer/defroster
- Arctic package
- Brake lines guards (for severe service and forestry application)
- Centralized lubricating system
- Hydraulic kit for 3-spool valve; includes piping and auxiliary lever
- Set of filters for 1000-1500-2000 h maintenance
- Sound reduction guards, frame, lower
- Superstructure w/sound suppression package
- Tool carrier, quick coupler
- Working attachments for use w/tool carrier:
 - bucket, general purpose, w/spade nose, 3.4 cu.m (4.5 cu.yd)
 - bucket, general purpose w/teeth, 3.4 cu.m (4.5 cu.yd)
 - rock bucket, straight edge w/teeth, 2.7 cu.m (3.5 cu.yd)
 - fork-lift attachment, 7000 kg (15,430 lb) lifting capacity
- Working attachments:
 - bucket, general purpose 3.4 cu.m (4.5 cu.yd) w/ripper
 - bucket, general purpose, 3.4 cu.m (4.5 cu.yd), w/teeth
 - bucket, general purpose, 3.4 cu.m (4.5 cu.yd), w/spade nose
 - bucket, general purpose, 3.4 cu.m (4.5 cu.yd), spade nose w/bolt-on cutting edge
 - bucket, general purpose, 3.4 cu.m (4.5 cu.yd), straight edge w/bolt-on cutting edge
 - coal and agricultural, ejector bucket, 5.6 cu.m (7.3 cu.yd)
 - high dump bucket, 2.8 cu.m (3.7 cu.yd)
 - light material bucket, 5.7 cu.m (7.5 cu.yd)
 - multipurpose bucket, 2.6 cu.m (3.4 cu.yd), w/teeth
 - rock bucket, 2.7 cu.m (3.5 cu.yd), spade nose
 - rock bucket, 2.7 cu.m (3.5 cu.yd), spade nose w/teeth
 - rock bucket, 2.7 cu.m (3.5 cu.yd), straight edge w/teeth
 - bucket, belt conveyor vicinity clean up
 - fork-lift attachment, 5500 kg (12,125 lb) lifting capacity
 - hydraulic grapple, 5500 kg (12,125 lb) lifting capacity

Specifications subject to change without notice. Illustrations and pictures may include optional equipment and may not include all standard equipment.

DRESSTA co.Ltd.

Kwiatkowskiego 1, 37-450 Stalowa Wola, P O L A N D
tel.: +48 15 813 5252, 813 4556 fax: +48 15 844 4714, 872 0207
www.dressta.com.pl