



TD-20M

CRAWLER DOZER
STD-LT-LGP



■ **Net Horsepower**
179 kW (240 hp)

■ **Blade Capacity**
up to 8.45 m³ (11.1 yd³)

■ **Operating Weight**
23 650 kg (52,139 lb) STD
24 210 kg (53,373 lb) LT
24 680 kg (54,410 lb) LGP

179 kW (240 hp) Cummins QSC8.3 engine
meets EU Stage IIIA and EPA Tier3 emission standards

Modular cooling system
with hydraulically driven, variable speed
fan improves cooling, fuel and environmental
sound efficiency

Exclusive two-speed geared steering system
offers superior traction

Two-piece hinged radiator guard doors enable greater
access to the cooling fan and cooling module

Sloped engine hood combined with a high
operator eye level provides excellent
visibility to the blade corners

Semi-U and Full-U blades with tilt or tilt/pitch system,
straight and angle dozer blades with tilt,
to suit any dozing applications



TD-20M Extra Big Performer



Comfortable, sound suppressed cab equipped with:

- air recirculation system
- air conditioner /heater/ pressurizer
- deluxe air suspension seat with arm rests
- ergonomically design joystick controls for direction, blade and ripper

Conveniently placed steps, handholds and walkways greatly assist the operator and provide for a safer work platform

Preset travel speed selection with automatic downshift control provides greater operator efficiency

The modular power train design combined with easily accessible diagnostic check ports, filters and sight gauges provide for excellent serviceability

Exclusive undercarriage design provides maximum durability while giving the operator a smooth, stable ride
Standard LTS system and lifetime lubricated rollers and idlers for greatly extended track life

Factory production for arctic, hot climate, landfill, forestry and LGP applications increase this crawler's versatility

mance, medium size package



Cummins QSC8.3 engine meets EU Stage IIIA and U.S. EPA Tier3 emissions standards. The QSC advanced electronics provide enhanced engine performance with higher torque and better throttle response at every rpm. Long maintenance intervals, better cold starting and quieter operation provide improved operator comfort.

Exceptional Visibility

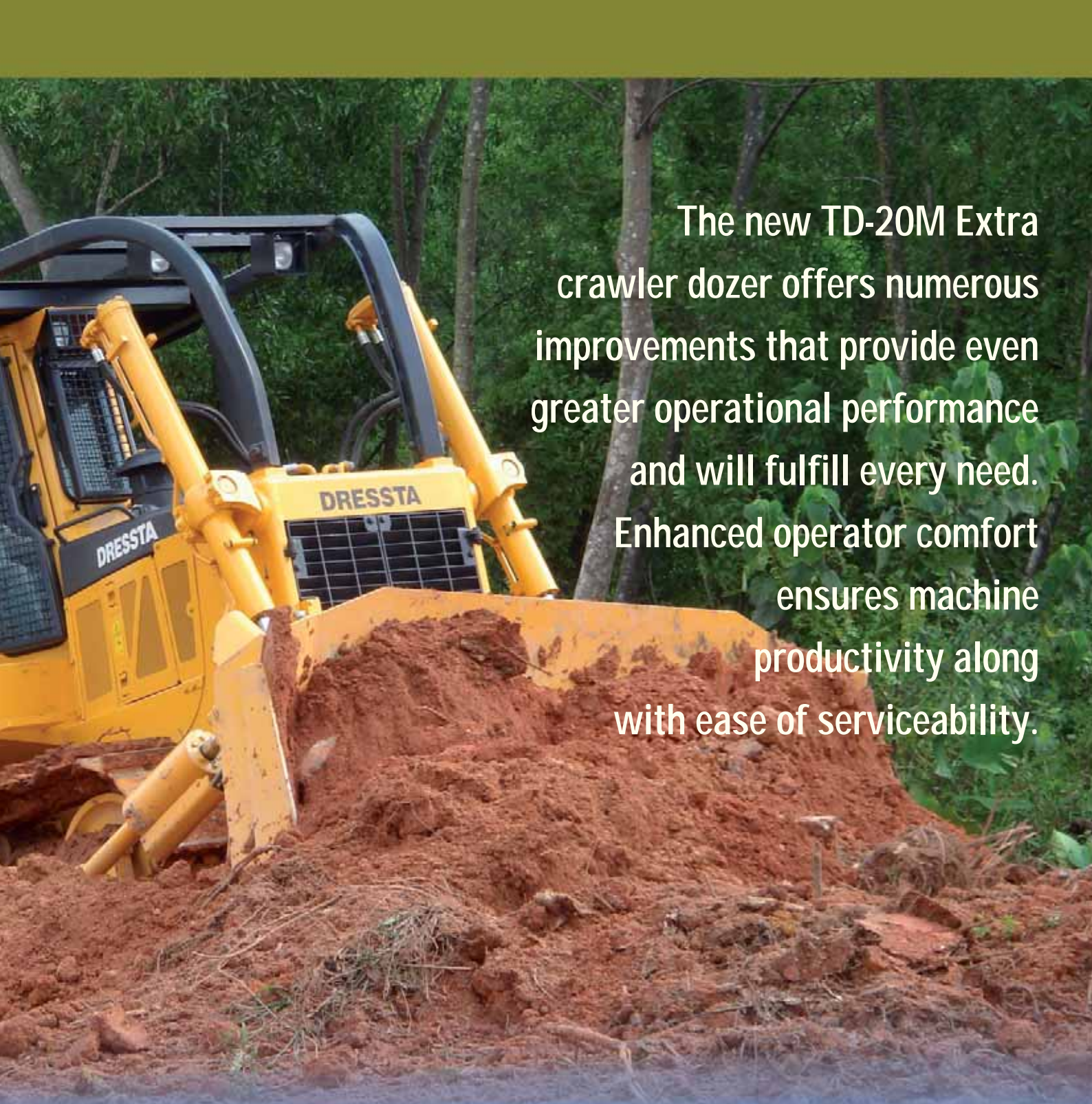
Comfortable 6-sided cab with large side and rear sliding windows providing the operator with enhanced view of both the blade and ripper equipment.



Steering Module

Exclusive to Dressta, standard two-speed geared steering allows full power turns for full load retention, lowers sprocket and track bushing wear, increases ripping operation performance and allows greater directional control in both slope work and side cutting.

Two-speed steering provides higher production and lower operating costs day in day out, lowering ownership costs through increased traction and less track slippage.



The new TD-20M Extra crawler dozer offers numerous improvements that provide even greater operational performance and will fulfill every need. Enhanced operator comfort ensures machine productivity along with ease of serviceability.

Power Train System

The modular design incorporates time - proven conventional components that enable fast removal and replacement.

All major components can be replaced in the field in a matter of hours, which drastically reduces machine downtime and provides for the fast return of the machine to profitable operation.



Motion Control

The left hand joystick controls transmission and steering drive for up and down shifting, steering Hi/Lo selection and LH/RH gradual turn.

Preset travel speed selection and auto - downshift provide comfortable operation and high productivity without the need for the operator to concentrate on up or downshifts.

Specification

ENGINE

- * Make and Model CUMMINS QSC8.3
- Type In-line, 6-cylinder
- Aspiration Turbocharged and CAC
- Fuel system HPCR Electronic
- Gross Horsepower, SAE J1995 194 kW (260 hp)
- ** Net Horsepower, SAE J1349/ISO 9249 179 kW (240 hp)
- Rated rpm 2200 rpm
- Max. torque @1500 rpm 1180 Nm (870 lb-ft)
- Displacement 8.3 l (505 in³)
- Bore and Stroke 114 x 135 mm (4.49" x 5.32")
- Air cleaner dry type with exhaust aspirated primary
..... and safety elements and service indicator

* Meets EU Stage IIIA and EPA Tier 3 emission standards

**Net Horsepower at the minimum speed of hydraulic fan 191 kW (256 hp)

TRANSMISSION & TORQUE CONVERTER

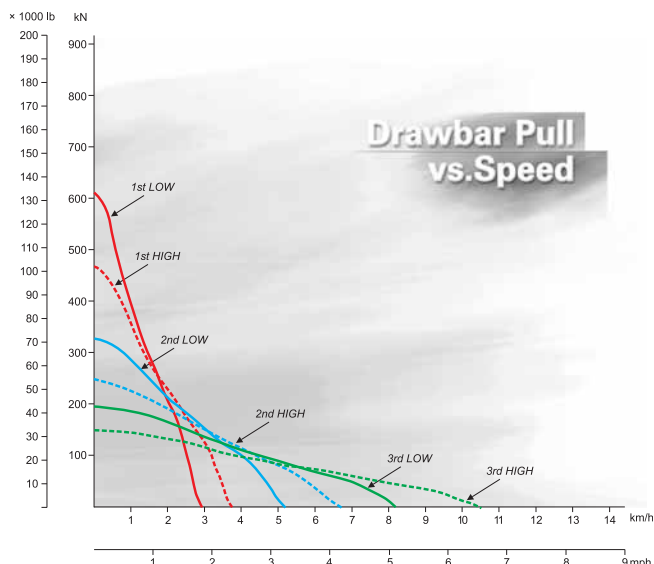
Modular, countershaft type power shift, electro-hydraulic control.

Preset travel speed selection and auto-downshift.

Single stage 370 mm (14.6") torque converter with a 2.3:1 stall ratio drives to transmission through a double universal joint.

TRAVEL SPEEDS

Gear	Range	Forward		Reverse	
		km/h (mph)	km/h (mph)	km/h (mph)	km/h (mph)
1 st	Low	2.9 (1.8)	3.5 (2.2)		
	High	3.8 (2.4)	4.5 (2.8)		
2 nd	Low	5.3 (3.3)	6.2 (3.9)		
	High	6.8 (4.2)	8.0 (5.0)		
3 rd	Low	8.3 (5.2)	9.8 (6.1)		
	High	10.6 (6.6)	12.5 (7.8)		



STEERING & BRAKING

Two-speed geared steering module provides gradual turns while maintaining full power to both tracks plus conventional clutch-brake performance for tight or pivot turns. This type of steering system offers superior traction in all types of operations and terrain.

Coupled to 3-speed transmission, the 2-speed steering provides 6 speeds forward and 6 reverse. The left hand joystick controls transmission and steering drive for up and down shifting, steering, Hi/Lo selection and LH/RH gradual geared turn.

Foot pedal applies both brakes for parking and downhill control. Brakes are spring applied and hydraulically released.

FINAL DRIVES

Double-reduction with outboard planetary final drive stage provides desired gear reduction at the sprocket. Ring-type sprocket distributes wear evenly over track bushings letting every tooth ride free one-half of the time to reduce wear. Final drives or sprockets are replaceable without removing track frames.

TRACK FRAME

All-welded heavy box section track frame is kept in alignment with track frame guides providing true vertical oscillation.

- Track rollers, each side STD (LT, LGP) 6 (7)
- Top idlers, each side 2
- Front idlers (drum type) 1
- All rollers and idlers lifespan lubricated
- Oscillation at center of front idler (STD) 295 mm (11.6")
- Oscillation at center of front idler (LT, LGP) 328 mm (12.9")

HYDRAULIC CONTROL SYSTEM

Multiple gear pumps, driven from torque converter.

Output @ 6.89 MPa (1,000 psi) and 2330 rpm:

1 st pump - 142 l/min (37.5 gpm)

2 nd pump - 62.5 l/min (16.5 gpm)

and pilot pump output @ 2.07 MPa (300psi) - 35.2 l/min (9.3 gpm)

Relief valve setting:

blade lift & ripper 16.9 MPa (2,450 psi)

tilt 17.9 MPa (2,600 psi)

Cylinders, bore and stroke:

lift 110 x 1300 mm (4.33" x 51.18")

tilt 180 x 146.5 mm (7.09" x 5.73")

tilt/pitch 180/165.1 x 146.5 mm (7.09"/6.5" x 5.73")

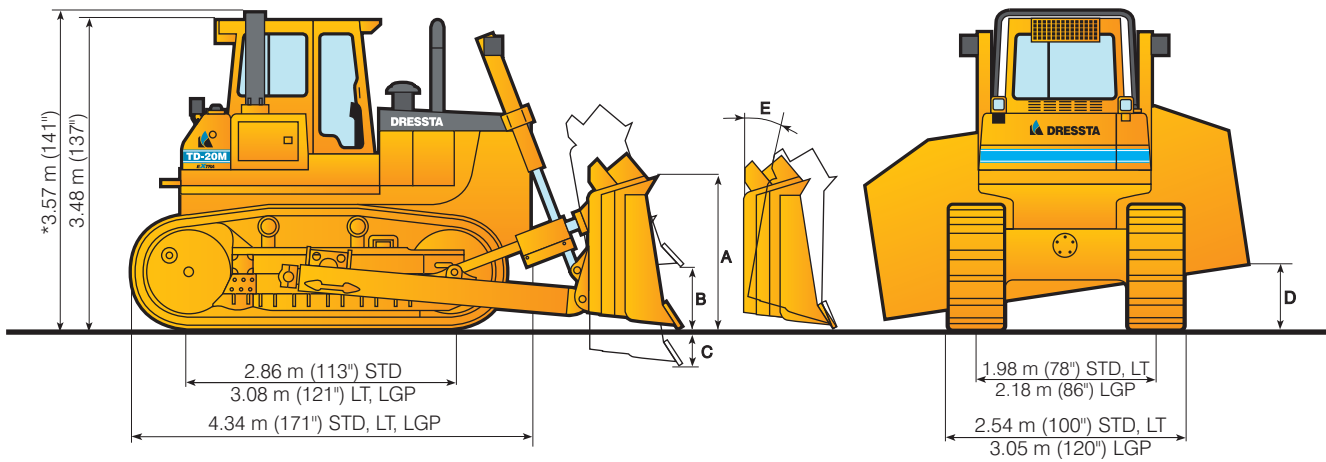
REFILL CAPACITIES

	Liter	(US gal)
Fuel tank	490	(130)
Cooling system	50	(13.2)
Crankcase	23	(6.1)
Transmission system	173	(45.8)
Final drive, each side	38	(10)
Hydraulic reservoir	133	(35)

OPERATING WEIGHT

Includes standard equipment.

Type of blade	STD Semi-U	LT Semi-U	LGP Straight
Canopy ROPS	23650 kg (52,139 lb)	24210 kg (53,373 lb)	24680 kg (54,410 lb)
Cab	24200 kg (53,351 lb)	24760 kg (54,586 lb)	25230 kg (55,622 lb)



* OVERALL HEIGHT w/Canopy ROPS/FOPS - 3.62m (142.5")
 VERTICAL DIMENSIONS INCLUDE 67 mm (2.63") GROUSER HEIGHT

OVERALL DIMENSIONS WITH EQUIPMENT

BLADE SELECTION		SEMI-U	FULL-U	ANGLE	STRAIGHT
Length with drawbar and blade	STD	5.64 m (18'6")	5.88 m (19'4")	5.72 m (18'9")	-
	LT	5.86 m (19'3")	6.10 m (20')	5.94 m (19'6")	-
	LGP	-	-	-	5.68 m (18'8")
Length with blade and ripper	STD	7.02 m (23')	7.26 m (23'10")	7.10 m (23'4")	-
	LT	7.24 m (23'9")	7.48 m (24'7")	7.32 m (24')	-
Width, blade angled		-	-	4.00 m (13'2")	-
Width over trunnions		2.89 m (9'6")	2.89 m (9'6")	2.89 m (9'6")	3.32 m (10'11")
Width over "C" frame		-	-	3.17 m (10'5")	-

BLADE SPECIFICATIONS

BLADE SELECTION		SEMI-U	FULL-U	ANGLE	STRAIGHT
UNDERCARRIAGE		STD & LT	STD & LT	STD & LT	LGP
Blade Capacity, SAE J1265		7.04 m ³ (9.2 yd ³)	8.45 m ³ (11.1 yd ³)	3.88 m ³ (5.1 yd ³)	6.03 m ³ (7.9 yd ³)
Blade dimensions: - width over end bits - height		3.5 m (138")	3.86 m (152")	4.41 m (174")	4.37 m (172")
	A	1.6 m (63")	1.6 m (63")	1.09 m (43")	1.36 m (54")
Max. lift, straight	B	STD 1150 mm (45") LT 1220 mm (48")	STD 1150 mm (45") LT 1220 mm (48")	STD 1160 mm (46") LT 1230 mm (48.4")	1210 mm (47.6")
	C	STD 505 mm (19.9") LT 532 mm (20.9")	STD 505 mm (19.9") LT 532 mm (20.9")	STD 615 mm (24.2") LT 647 mm (25.5")	522 mm (20.6")
Max. drop below ground level					
Max. tilt adjustment	D	670 mm (26.3")	720 mm (28.3")	480 mm (19")	660 mm (26")
Blade angle, either side		-	-	25°	-
Max. pitch adjustment	E	10°	10°	-	-
Weight of blade equipment		3420 kg (7,540 lb)	3800 kg (8,377 lb)	3230 kg (7,120 lb)	2756 kg (6,076 lb)

UNDERCARRIAGE

ARRANGEMENT	STD	LT	LGP
Track shoe width, standard	560 mm (22")	560 mm (22")	864 mm (34")
Strutted track link pitch	216 mm (8.5")	216 mm (8.5")	216 mm (8.5")
Track shoes, each side	40	42	42
Ground contact area	3.2 m ² (4,972 in ²)	3.4 m ² (5,324 in ²)	5.3 m ² (8,228 in ²)
Ground pressure (w/standard equipment)	72.4 kPa (10.5 psi)	68.8 kPa (10.0 psi)	45.5 kPa (6.6 psi)
Grouser height	67 mm (2.63")	67 mm (2.63")	67 mm (2.63")
Track adjustment	full hydraulic	full hydraulic	full hydraulic
Ground clearance	460 mm (18.1")	460 mm (18.1")	460 mm (18.1")
Fixed drawbar-height from ground to centerline of 89 mm (3.5") clevis	569 mm (22.4")	569 mm (22.4")	610 mm (24")

RIPPER (not for LGP)

TOOL BEAM		SHANKS	
Overall width.....	2.13 m (84")	Number of shanks, max.....	3
Cross section, height x width.....	305 x 381 mm (12" x 15")	Spacing center to center	991 mm (39")
Ground clearance under tool beam:		Penetration, max.	700 mm (27.6")
- ripper raised	1295 mm (51")	Ground clearance, max. raised	596 mm (23.5")
- ripper lowered.....	178 mm (7")	Shank positions (vertical).....	2
WEIGHT		Penetration force	91.1 kN (20,479 lb)
Complete, including one shank	2900 kg (6,400 lb)	Pryout force	282.2 kN (63,439 lb)
Each additional shank.....	196 kg (432 lb)		

TD-20M

CRAWLER DOZER

STD-LT-LGP



STANDARD EQUIPMENT

- Air cleaner, dry type, with exhaust aspirated primary, safety elements and service indicator
- Alarm, back-up
- Alternator, 50 A
- Antifreeze, -37°C (-34°F)
- Batteries, (2) 12 V, 815 CCA, maintenance free
- Brakes, foot, spring applied, hydraulically released
- Canopy, 2 post ROPS/FOPS (SAE J1040, J231)
- Coolant filter conditioner
- Cooling module; includes radiator, transmission oil cooler, hydraulic oil/fan drive oil cooler and charge air cooler; isolation mounted
- Decelerator - right foot pedal, and brake - center foot pedal
- Diagnostic centers for power train and equipment hydraulic pressures
- Drawbar, rigid
- Engine hood, solid, sloped
- Exhaust pipe extension
- Fan, hydraulically driven, suction type, variable speed
- Filters, engine oil, full flow and by-pass with replaceable "spin-on" elements
- Filters, power train & equipment hydraulics, "spin-on" micro glass type
- Final drive seal guard
- Fuel strainer
- Guards: crankcase, hinged, with front pull hook, transmission, fan, radiator and sprocket rock and dirt deflector
- Hitch retrieval (LGP)
- Horn, electric
- Hydraulic control, 1 valve, 1 lever
- Instruments:
 - Gauges: fuel level, engine coolant temperature, engine oil pressure, torque converter oil temp., voltmeter, hourmeter, joystick control display
 - Warning lights: air cleaner filter, transmission oil filter, hydraulic oil filter, transmission/clutch oil low pressure
 - Audible & visual warning system: low engine coolant level, low engine oil pressure
- Lights with guards, 2 F - lift cylinders mounted, 2 R - fuel tank mounted
- Muffler, under engine hood, insulated
- Radiator guard door, two-piece, louvered, hinged
- Rear operator platform
- Receptacle, starting/charging
- Seat belt (SAE J386) - 3" wide, retractable
- Seat, air suspension type, vinyl cover, adjustable with arm rests, swivel 14° to right
- Starting, 24 V
- Starting aid - air grid heater
- Steering, planetary type, 2-speed, left hand single lever control (joystick)
- Tools compartment
- Torque converter, single stage
- Transmission, power shift, 3 speeds forward, 3 reverse, combined with 2 speed steering provides 6 speeds forward and 6 reverse, preset travel speed selection and auto-downshift
- Undercarriage
 - Track frames, oscillating type, lifespan lubricated rollers and idlers
 - Track adjusters, hydraulic
 - Track chain end guides, integral
 - STANDARD (STD)
 - Track chain, sealed and lubricated (LTS) with split master link, 40 links
 - Track frame, 6 roller, 1981 mm (78") gauge
 - Track shoes, 560 mm (22"), grouser type
 - LONG TRACK (LT)
 - Track chain, sealed and lubricated (LTS) with split master link, 42 links
 - Track chain center guides
 - Track frame, 7 roller, 1981 mm (78") gauge
 - Track shoes, 560 mm (22"), grouser type
 - LOW GROUND PRESSURE (LGP)
 - Track chain, sealed and lubricated (LTS) with split master link, 42 links
 - Track chain center guides
 - Track frame, 7 roller, 2180 mm (86") gauge
 - Track shoes, 864 mm (34"), extreme clipped corner, grouser type
- Water separator fuel system

OPTIONAL ATTACHMENTS

- AM/FM CD radio (for use with cab)
- Batteries, cold start, 960 CCA
- Blade Equipment:
 - Full-U, w/tilt or tilt/pitch, 8.45 cu.m (11.1 cu.yd)
 - Semi-U, w/tilt or tilt/pitch, 7.04 cu.m (9.2 cu.yd)
 - Angle dozer, less tilt, 3.88 cu.m (5.1 cu.yd)
 - Straight blade (LGP) w/tilt, 6.03 cu.m (7.9 cu.yd)
 - Hydraulic tilt for Angle dozer
- Cab and ROPS Equipment:
 - Air conditioner/heater/pressurizer/defroster, underseat mounted, A/C condenser behind roof mounted
 - Air recirculation system with MSHA external filter
 - Cab w/sound suppression, air recirculation system, 4 wipers w/washers, inside mirror, dome light and tinted safety glass
 - Heater/pressurizer/defroster
 - ROPS for cab or forestry attachment
 - Sweeps, forestry, front and rear
 - Screen rear
 - Seat, air suspension, fabric cover (for use w/cab)
 - Drawbar, heavy duty, counterweight
 - Engine enclosures:
 - solid hood and perforated side doors
 - hood and side doors perforated
 - perforated engine hood
 - Exhaust extension with guard (for use with forestry sweeps)
 - Guards:
 - Crankcase, severe service w/hook
 - Track roller, full length (LT & LGP)
 - Track roller, full length (STD)
 - Transmission, severe service
 - Tank guard, bolted
 - Hydraulic controls, 3-spool valve, 2-lever
 - Instrument panel guard (for use w/Canopy ROPS/FOPS)
 - Lights for Canopy ROPS/FOPS, 2F-2R
 - Lights for cab, 2F-2R
 - Lights, ROPS mounted, 2F (for use w/cab)
 - Lights for use with sweeps, 2F
 - Mirrors, 2 pcs, exterior
 - Ripper, multi-shank beam w/o hydraulic pitch
 - Hydraulic pitch for ripper beam
 - Ripper shank w/pin, max. 3
 - Screening package; cab for screens installation must be ordered
 - Screens for cab windows (front, rear, side and doors)
 - Screens for tractor and cab lights
 - Track shoes, set of 80, clipped corner (STD) 610 mm (24"), 660 mm (26")
 - Track shoes, set of 84, clipped corner (LT) 610 mm (24"), 660 mm (26")
 - Tools in metal box
 - Vandalism protection

Specifications subject to change without notice. Illustrations and pictures may include optional equipment and may not include all standard equipment.

DRESSTA Co.Ltd.

Kwiatkowskiego 1, 37-450 Stalowa Wola, POLAND
 tel. +48 (15) 813 5252, 813 4556 fax: +48 (15) 844 4714, 872 0207
www.dressta.com.pl